

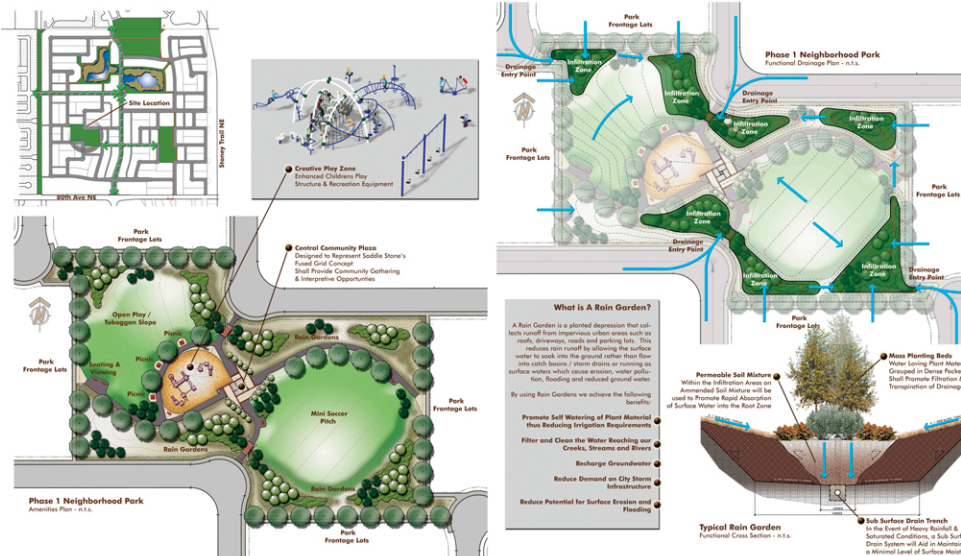
# Saddlestone Rain Gardens

Calgary, Alberta

This municipal reserve parcel will serve as one of the key focal points within the northeast community of Saddlestone. Our challenge as the lead designers and landscape architects was to integrate recreational function with significant storm water management elements into an urban park setting.

The park is in essence a giant filter for a large portion of the community's storm water run-off. Drainage will enter the park overland, gather in a series of infiltration pockets and be dispersed through evapotranspiration prior to reaching the main storm water retention facility.

Many design and approval challenges were encountered during this projects early phases. L A West gained invaluable LID experience on this project.



## PROJECTS

L A West



### Type:

Park / Open Space Design  
LID

### Client:

Genesis Land Dev. Corp.

### Size:

2.5 acres

### Services:

Landscape Design  
LID Analysis  
Urban Design  
Cost Analysis