

Perched atop escarpments overlooking the Pine Creek and Bow River corridors, the natural beauty of the Legacy lands is striking. Care has been taken to design the Legacy development in concert with the environment; to compliment the beauty of Legacy's natural amenities.

As part of the outline plan approval for Legacy, extensive open space and park planning has been undertaken by LA West. Intended to be a walkable, pedestrian oriented community, an integrated network of linear parks, greenways and intimate streetscapes comprise the heart of Legacy's character.

Architectural features, signage, community identity and theming are the other major design elements taken into account in the landscape design analysis.

**PROJECTS**  
L A West



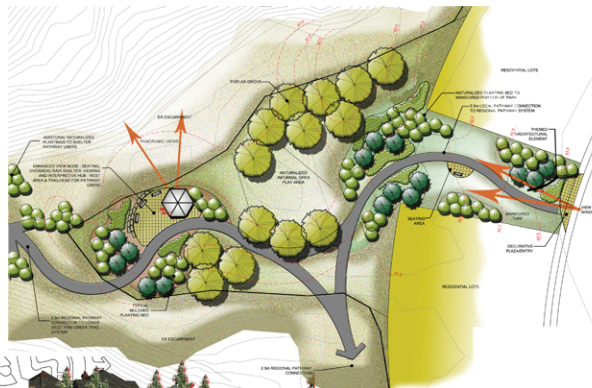
**Type:**  
Sustainable Residential Development

**Client:**  
Westcreek Developments

**Size:**  
1000 acres

**Services:**  
Landscape Design  
Open Space Master Plan  
LID Analysis  
Theme Development  
Urban Design

- Legend**
- **LINEAR SPACES**  
SPACES PERFORMING RECREATIONAL FUNCTIONS BY PROVIDING PEDESTRIAN CONNECTIVITY VIA PATHWAYS, TO EDUCATIONAL, RECREATIONAL, AND COMMERCIAL CENTRES.  
*SUSTAINABILITY PRINCIPLES # 1 & 2 CREATING VALUABLE COMMUNITIES & CONNECTIVE PEOPLE & SERVICES.*
  - **PERFORMESTHETIC SPACES**  
AREAS SERVING AN AESTHETIC PURPOSE PROVIDING LANDSCAPE AMENITIES TO HELP CREATE A UNIQUE IDENTIFIABLE SENSE OF PLACE AND COMMUNITY IDENTITY.  
*SUSTAINABILITY PRINCIPLE # 3 - FOSTERING A SENSE OF PLACE.*
  - **ACTIVE LOCAL SPACES**  
THESE RECREATIONAL SPACES THAT PROVIDE LOCAL AND SMALLER SCALE ACTIVE RECREATIONAL AMENITIES TARGETED TO SPECIFIC COMMUNITY DEMOGRAPHICS.
  - **COMMUNITY SPORTS FIELDS**  
LARGER OPEN AREAS USUALLY IN CONJUNCTION WITH SCHOOLS, THAT PROVIDE ACTIVE PLAY AMENITIES TYPICALLY IN THE FORM OF PROGRAMMABLE SPORTS FIELDS.
  - **EDUCATIONAL AND COMMUNITY ASSOCIATION**  
OPEN SPACES THAT LEAD TO ACCOMMODATE CURRENT AND FUTURE DEVELOPMENT OF COMMUNITY SCHOOLS AND EDUCATIONAL FACILITIES.
  - **ENVIRONMENTAL AREAS**  
OPEN SPACES THAT ARE CREATED TO PRESERVE ENVIRONMENTAL & SCIENTIFIC AREAS IN THE NATURAL BEAUTY OF THE COMMUNITY. THESE AREAS PROVIDE RECREATION POTENTIAL THROUGH INTERPRETIVE AND RECREATIONAL FACILITIES.  
*SUSTAINABILITY PRINCIPLE # 4 - PRESERVING NATURAL AREAS APPROPRIATELY IN ORDER TO ENHANCE THE QUALITY OF LIFE.*



**Open Space Plan** This plan is conceptual only and may be subject to change