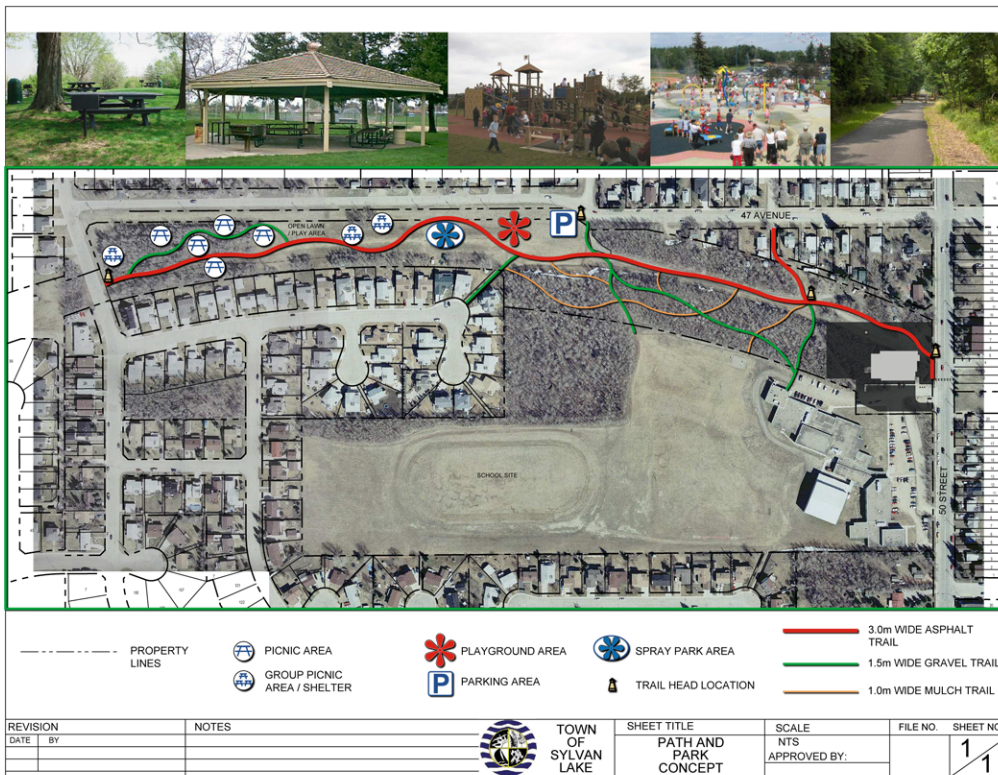


Canadian Pacific Trailway

Sylvan Lake, Alberta

The Town of Sylvan Lake set aside a former CP Railway Right of Way for the development of a series of pathways based on four types of trails that would tie into the existing trail network.

Areas of importance included connections to the adjacent schools and neighbourhoods, applying CPTED principles to maintain pedestrian safety, and protection of existing vegetation and wildlife. Plans included parking layouts, playground and picnic areas and trailhead markers.



PROJECTS

L A West



Type:

Trails Master Plan

Client:

Town of Sylvan Lake

Size:

20 acres

Services:

Field Inventories
 Environmental Reclamation
 Trails Master Plan
 Way-finding Analysis
 Intermunicipal Interface